



**State Energy Conservation Office (SECO)  
Municipally Owned Utility (MOU) or Electric Cooperative (Co-op)  
SB-924 Energy Efficiency Report  
Data Entry Form**

MOU or Co-op: Farmers Electric Cooperative  
 County: Hunt Co – main office  
 Contact: Eric Austin  
 Contact Title: District Supervisor  
 Address: 108 W. Marble St  
 City: Wylie  
 Zip: 75098  
 Phone: 903-453-0577  
 Fax: 903-453-0677  
 E-mail Address: EAustin@farmerselectric.coop

**1) Is your MOU or Co-op hereby reporting on energy efficiency as required by SB-924, PURA Sections 39.9051 and 39.9052?**

Yes     No

**2) Energy Efficiency Goals: Please tell us about the goals that your MOU or Co-op has related to energy efficiency:**

Instructions: Provide a brief description of your MOU or Co-op's energy efficiency goals for the previous calendar year. Examples may include information about energy efficiency for MOU or Co-op customers or utility facilities. Supplemental information may be provided at your option on any long-term energy efficiency goals that your MOU or Co-op might have. Please use a separate sheet of paper if you need more space.

Farmers EC offers rebates for higher efficiency appliances and a HVAC rebate program. We Also offer free in-home energy audits. We offer a 1:1 retail credit on distributed generation (to net zero). And workshop programs for schools and churches. We sell Marathon water heaters and offer rebates on them as well.

**3) Your MOU or Co-op's Energy Efficiency Programs:**

Instructions: Input information as applicable; add fields as necessary. For the previous calendar year, please list energy efficiency programs and provide applicable estimated achieved savings – energy and/or demand, or other program performance metric (for example participation.) Add additional lines as needed.

Energy Efficiency Program	Estimated Energy Savings or	Estimated Demand Savings or	Other Program Performance Metric
<b>Totals</b>	Farmers EC has a goal of 3% reduction for the residential membership- however this is affected greatly by the weather. Last year's extreme winter and summer made it difficult to quantify reductions. Add to	3%	

	that our increased growth rate; both residential and commercial, reductions on existing accounts are being overshadowed by new loads.		
--	---	--	--

**4) Program Materials / Additional Information**

Instructions: Public information about your energy efficiency programs (brochures, website information, etc.) may be attached and provided with this form.

**5) Please submit this form to SECO at: [SB924.Reporting@cpa.state.tx.us](mailto:SB924.Reporting@cpa.state.tx.us)**

**Links to our website showing all the programs we offer.**

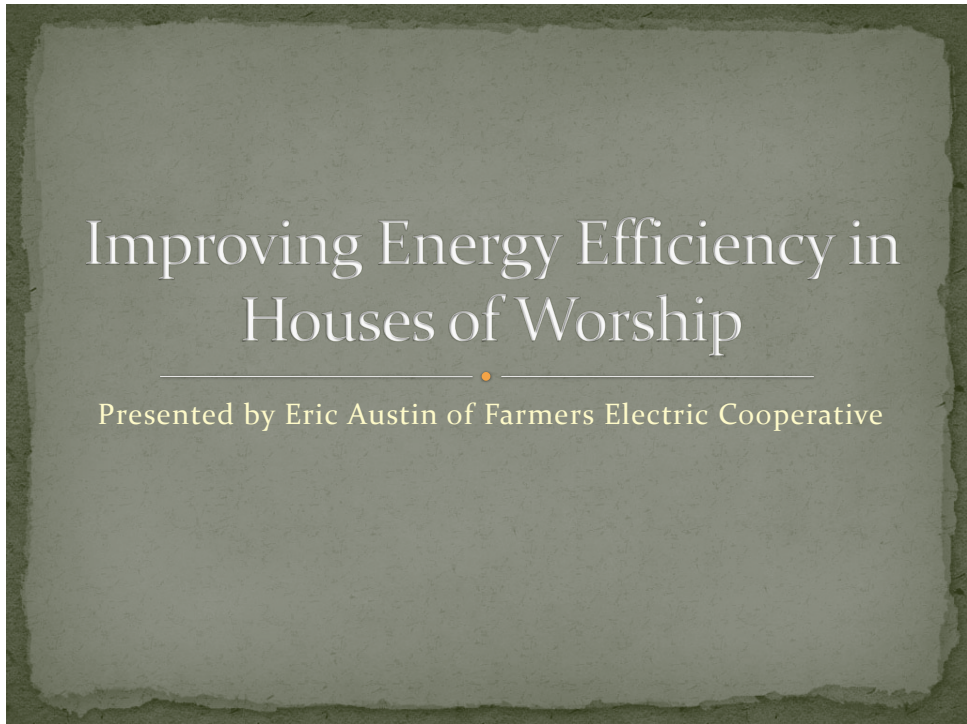
<http://www.farmerselectric.coop/saveEnergy/distributedGeneration.aspx>

<http://www.farmerselectric.coop/saveEnergy/energyEfficiencyRebates.aspx>

<http://www.farmerselectric.coop/saveEnergy/marathonWaterHeaters.aspx>

<http://www.farmerselectric.coop/saveEnergy/homeEnergyAudits.aspx>

<http://www.touchstoneenergy.com/efficiency/residentialenergyaudit/Pages/tse-rea/default.html>



<http://www.schoolenergysaving.com/>

**This is a complete list of programs we offered our members last year.**

**The School Energy Efficiency Program was by invitation; all schools in our membership were invited. The house of worship workshop was open to our entire membership and was held in four different towns at different times.**